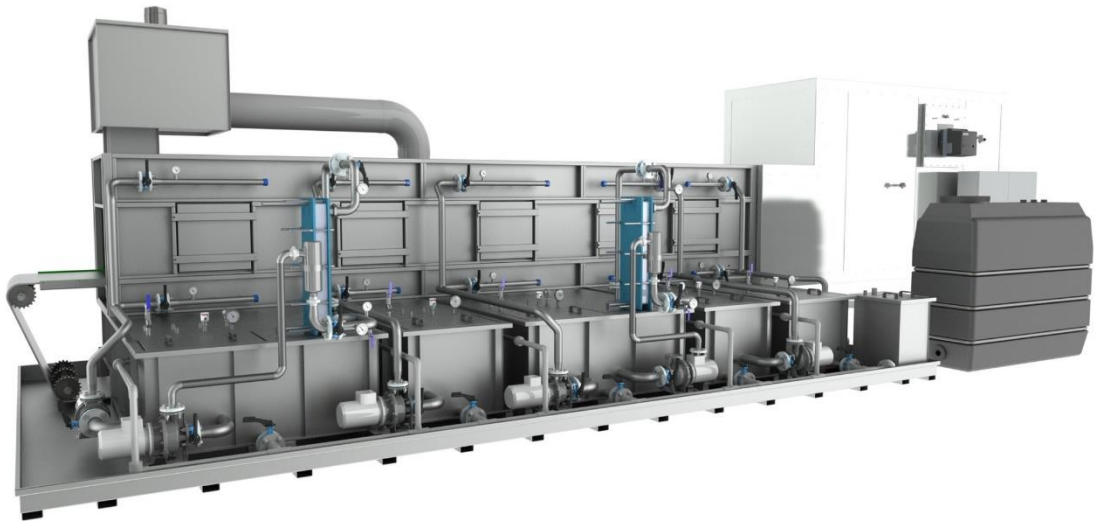


BAND-POWER-WASH

PRETREATMENT ON AN AUTOMATIC CONVEYOR BELT WITH
SUBSEQUENT DRYING.



TECHNICAL DESCRIPTION

Conveyor belt pressure washer systems are “washing streets” which are suitable for a high throughput of small parts. The difference between this and a normal continuous feed pretreatment system is how the system is equipped. The parts that need to be washed can be loaded in a chaotic fashion and don't have to be placed individually onto a product holder. The small parts are transported on a conveyor belt through the individual treatment zones (e.g. degreasing, phosphating, rinsing) where they are treated with the corresponding medium.

MONTA BAND-POWER-WASH consist of a robust stainless-steel sheet metal tunnel with dip tanks fitted underneath it. With the optimum design and layout of our spray nozzles and spray rings, this results in complete, enclosed spray coverage. Your parts will then have been pretreated as well as possible and to a consistent standard, ready for the following stages. The compact construction and optimum insulation ensures that a MONTA conveyor belt pressure washer is very energy efficient.